



## Setting up an Imaging Source Camera to be used with HImage++ 2005 (DMK21F04 / DFK21F04)

HImage++ 2005 has a DirectX Picture tool that was written to support "any" imaging hardware that ships with a supported DirectShow driver.

This includes frame grabbers, FireWire Cameras, USB Cameras, and other hardware that produces an image.

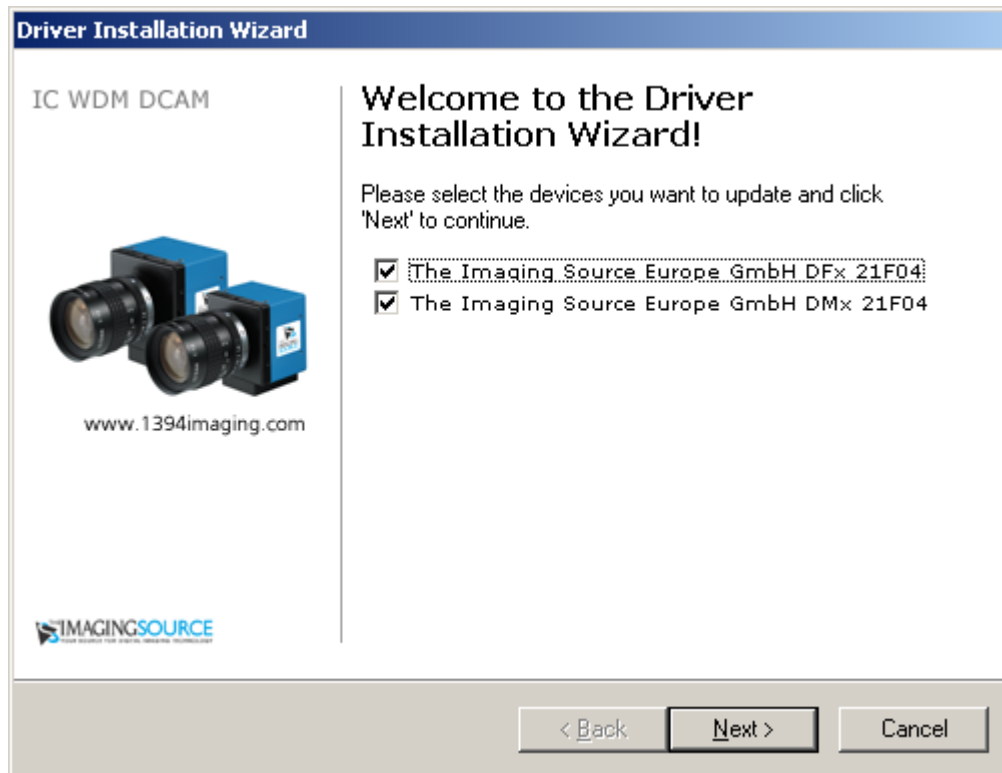
The first step in hooking up the hardware (in this case an Imaging Source DMK21F04/DFK21F04 camera) is to install the hardware vendor's DirectShow driver. This is a small piece of software provided by the hardware vendor, not Western Vision Software. For supported cameras, you can also find these drivers on the HImage++ Setup CD or on Western's Homepage [www.wvision.com](http://www.wvision.com). If you purchased the camera from Western, then we will have the drivers available for you to use on our homepage or on the HImage++ Setup CD.

Most installations are similar, but this installation is specific to the DMK21F04 and/or DFK21F04 FireWire camera. See the manual of your specific hardware if you are not using one of these cameras and check our homepage for other specific hardware setup procedures.

**Step1:** The first step is to locate the DirectShow driver. In this case you can download the latest version from The Imaging Source at [http://www.1394imaging.com/products/software/icwdm/icw\\_dcamltis.htm](http://www.1394imaging.com/products/software/icwdm/icw_dcamltis.htm)

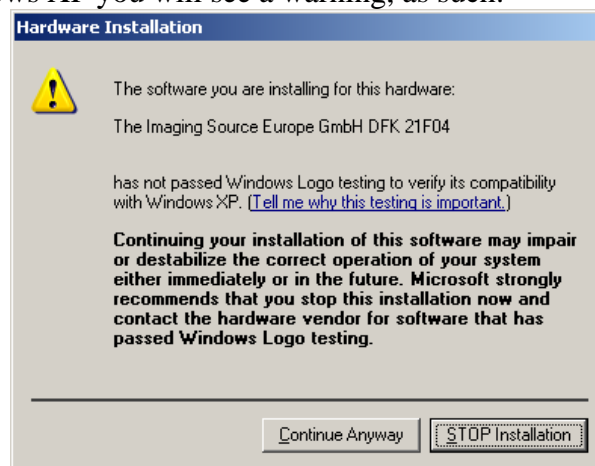
Once you download the driver, unzip the file to some folder of your choosing. The folder should now contain all the files needed for the DirectShow Driver. This driver has a very nice setup program to help you install the driver. Run the file *drvInstaller.exe* to open the DirectShow Driver Install program.

**Step 2:** The driver setup program will search for plugged-in cameras. Plug your camera in now, as instructed by the setup program, as such:



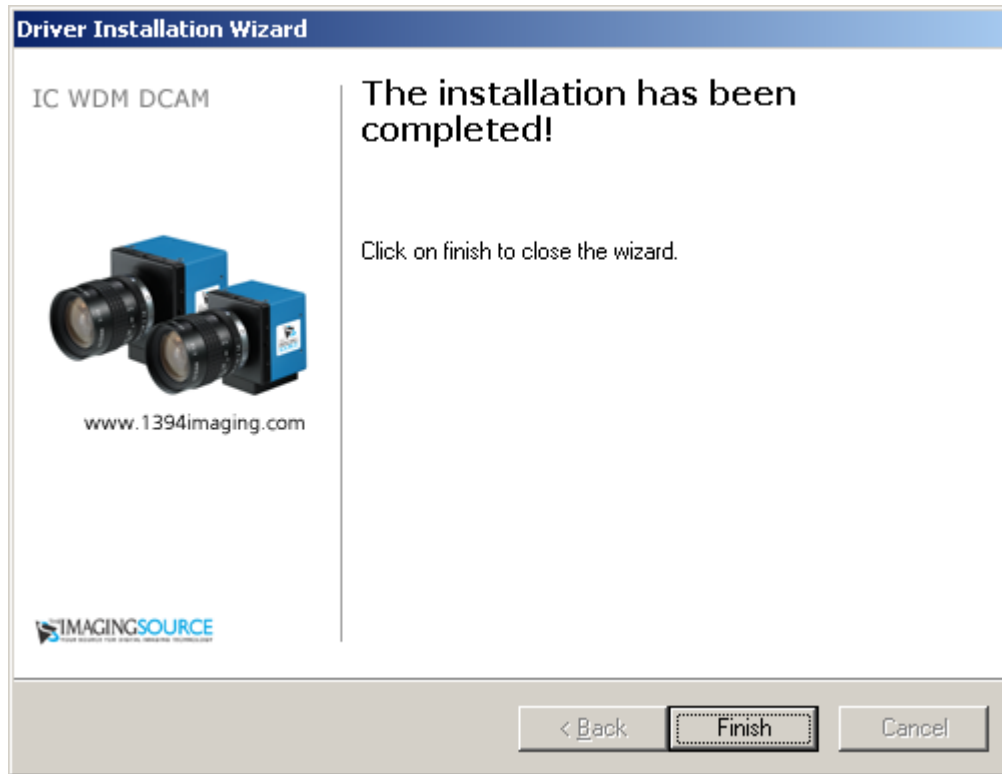
Click the next button and follow the instructions until your drivers are installed. If you only have one camera, only the one camera will be listed in the image above.

Under Windows XP you will see a warning, as such:



Click 'Continue Anyway' to install the driver.

The driver will continue to install until it has finished.




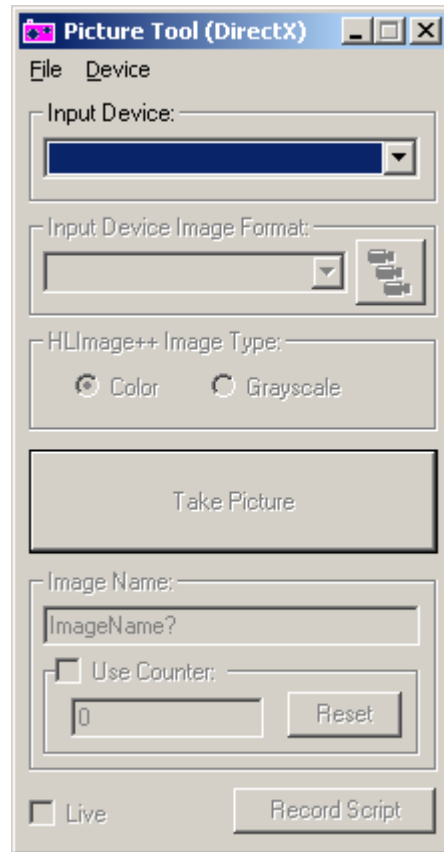
Click Finish to complete the driver installation.

**Step 3:** (Optional step). If you wish to see if the driver truly installed correctly, open up "Device Manager" (also part of Computer Management in the control panel, and look under imaging devices. You should see your camera listed.

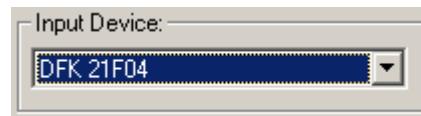
If you right click on your camera and select properties, you should see a message that says "This device is working properly."

**Step 4:** Close all other programs and open up HLImage++ 2005. Then

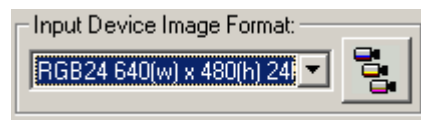
open the DirectX Picture Tool by clicking on the  Camera Icon in the toolbox. This will open the DirectX Picture Tool as such:



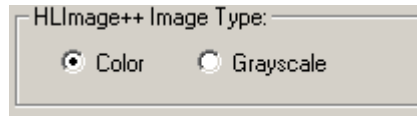
**Step 5:** Select your camera from the list of input devices. All imaging devices that have direct show drivers that are successfully installed in your system will be listed in this drop down. Select the DMK/DFK camera, as shown:



**Step 6:** Select the 'Format' that you wish to capture, such as 640x480 color, as shown:



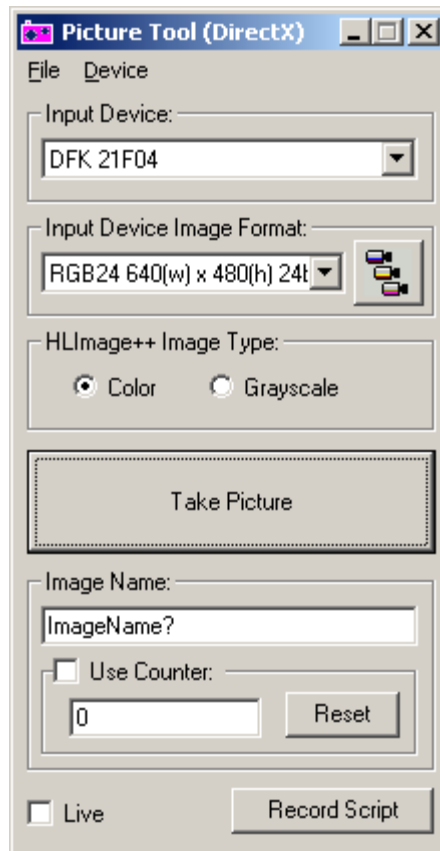
**Step 7:** Select if you wish to use a color image or a grayscale image. If you are using a color format, it is best to use a color image, as shown:



**Step 8:** Your camera is now ready to take pictures. You can now use the Take Picture button to take a picture or you can use the live check box to see a live image. Viewing a live image is useful to setup the cameras settings. To change the cameras settings open the settings box by selecting the menu item Device | Device Properties.

Each camera will have a different Device Properties Box, as it is part of the DirectShow driver itself. Use the controls to setup the camera while viewing a live image. When finished, close the properties box and turn off live image by un-checking the live checkbox. Then take images with the Take Picture button.

Your tool should now look like the following:



If you have questions, please send an email to us at [support@wvision.com](mailto:support@wvision.com)

### **Known Issues with Imaging Source Camera Line:**



1. The custom format button does not work and will crash the driver if clicked. Use the dropdown list to change formats.
2. End of known issues.